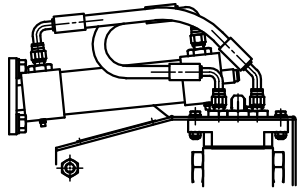


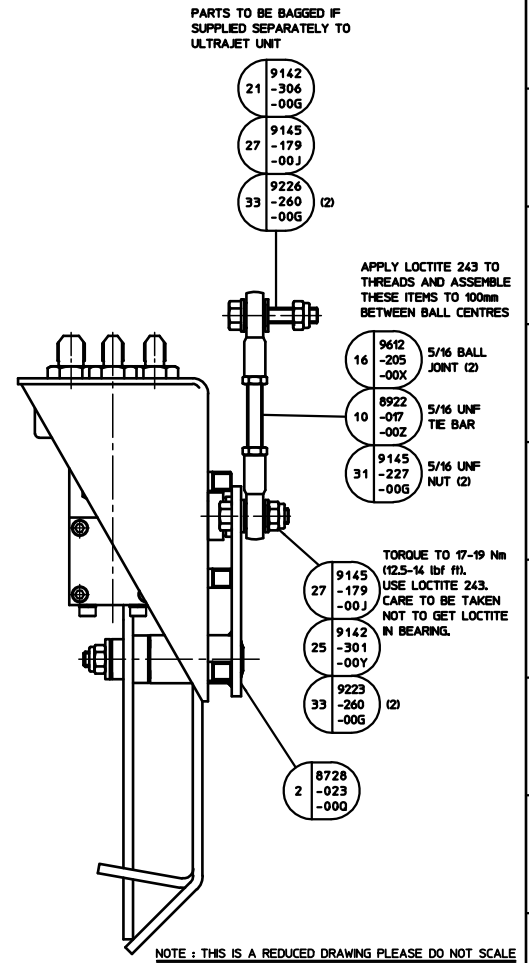
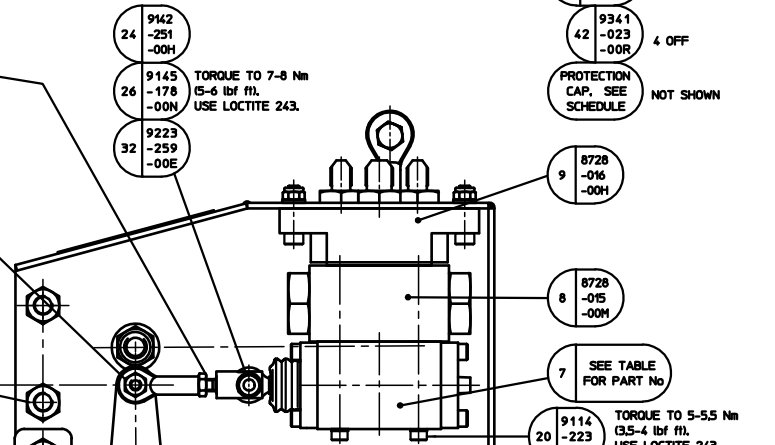
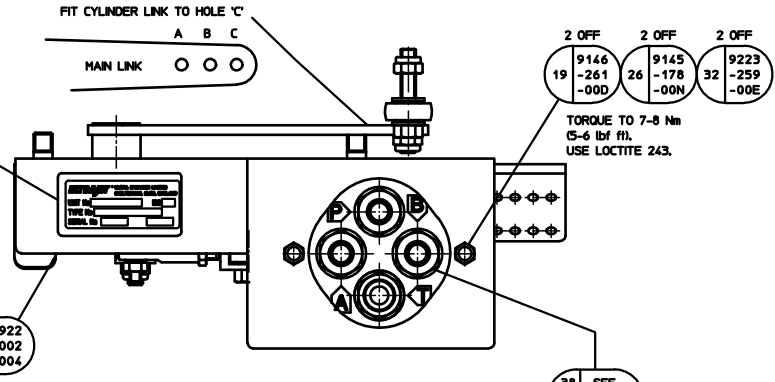
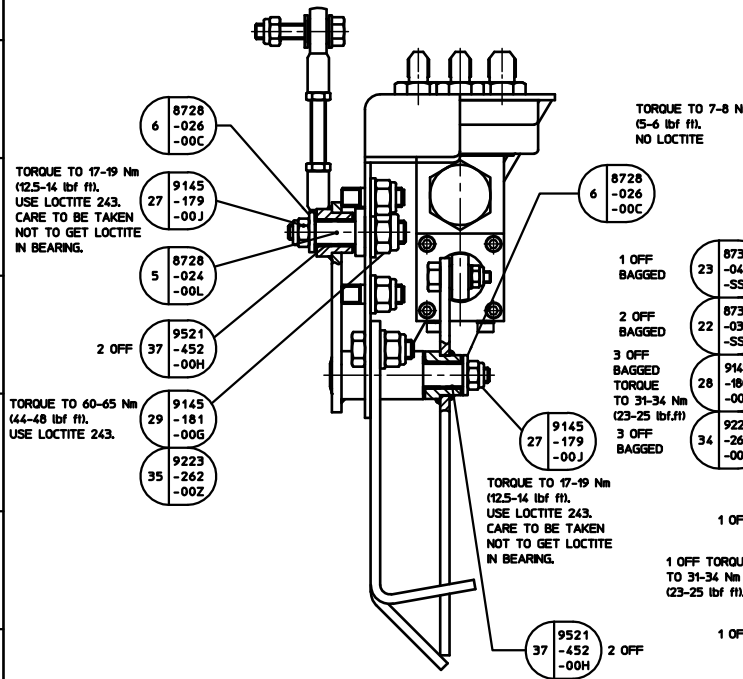
ASSEMBLY PART No.	CONTROL VALVE TYPE	CONTROL VALVE PART No.	PORT P FITTING	PORT T FITTING	PORT A & B FITTING	FLEX HOSE PORT A TO CYL	FLEX HOSE PORT B TO CYL	CYLINDER PORT FITTINGS
2002-003-0AM	OPEN CENTRE	(7) 8728-014-00R	(40) 9162-004-00S (BSP)	(40) 9162-004-00S (BSP)	(38) 9162-022-000 (BSP)			(48) 9162-607-00Y (BSP)
2002-003-0BK	CLOSED CENTRE	(7) 8728-014-0AX	(40) 9162-004-00S (BSP)	(40) 9162-004-00S (BSP)	(38) 9162-022-000 (BSP)			(48) 9162-607-00Y (BSP)
2002-003-0CH	OPEN CENTRE	(7) 8728-014-00R	(38) 9162-600-006 (JIC)	(40) 9162-601-00W (JIC)	(38) 9162-600-006 (JIC)	(51) 9616-33G-294 (JIC)	(50) 9616-34A-37Q (JIC)	(48) 9162-901-00D (JIC)
2002-003-0DF	CLOSED CENTRE	(7) 8728-014-0AX	(38) 9162-600-006 (JIC)	(40) 9162-601-00W (JIC)	(38) 9162-600-006 (JIC)	(51) 9616-33G-294 (JIC)	(50) 9616-34A-37Q (JIC)	(48) 9162-901-00D (JIC)



VIEW SHOWING ORIENTATION OF HOSES

APPLY LOCTITE 243 TO THREADS AND ASSEMBLE THESE ITEMS TO 50mm BETWEEN CENTRES

- 1/4 BALL JOINT (17) 9162-204-009
- 1/4 UNF THIN NUT (30) 9145-226-00L
- CLEVIS (4) 8728-006-00N



USED ON	ULTRAJET 251
UNIT No.	2002-003-0AM/0DF
ISSUE No.	6
ISSUED ON	AU17687
DRAWN	P.C.B.
DATE	8-8-05
CHECKED	K/Bradley 9-8-05
APPROVED	M/Lea 9-8-05

UNLESS OTHERWISE STATED ALL DIMENSIONS IN MILLIMETRES. GENERAL MANUFACTURING STANDARDS TO BS 200. GEOMETRIC TOLERANCES AND SYMBOLS TO BS 308.

ULTRA DYNAMICS LIMITED 2001

THIS DRAWING IS THE PROPERTY OF ULTRA DYNAMICS LIMITED AND IS CONFIDENTIAL. IT IS ISSUED SUBJECT TO THE CONDITIONS THAT:

(1) THE INFORMATION ON ANY PART THEREOF CONTAINED IN IT SHALL NOT BE DISCLOSED IN ANY FORM TO A THIRD PARTY, AND

(2) IT OR ANY PART OF IT SHALL NOT BE REPRODUCED IN ANY FORM.

THIRD ANGLE PROJECTION

TITLE: HYDRO - MECHANICAL REVERSE CONTROL SYSTEM ASSEMBLY

DRAWING No.: 2002-003-0AM

SCALE: 1:1

ULTRA DYNAMICS LTD CHELTENHAM, GLOS., ENGLAND, A0