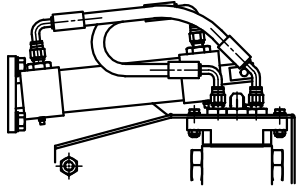
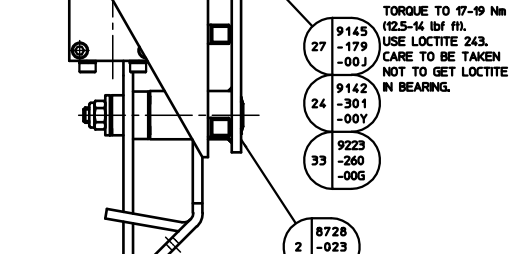
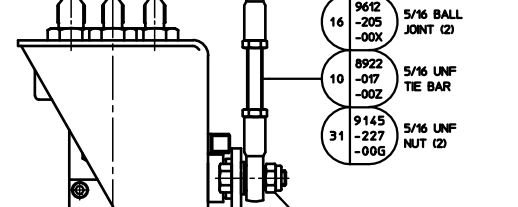
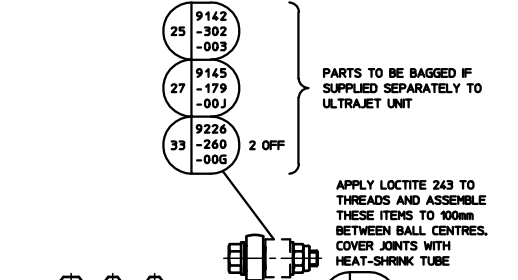
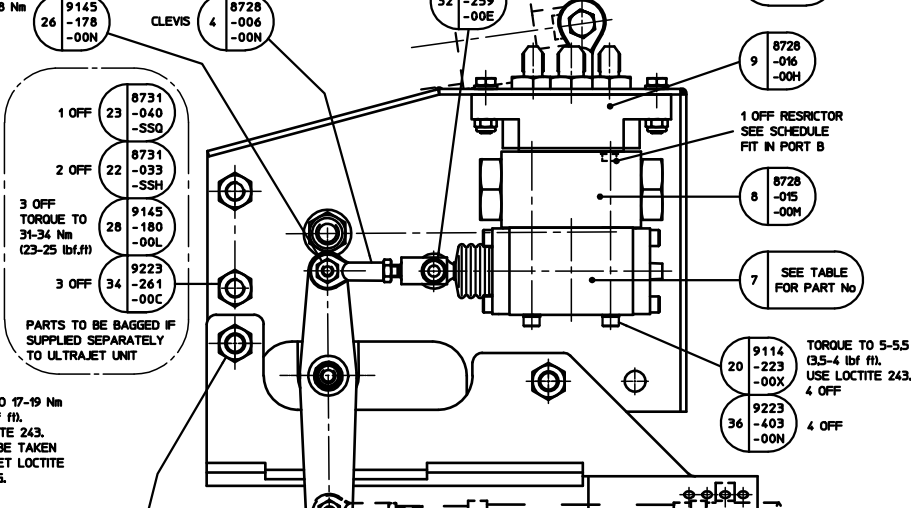
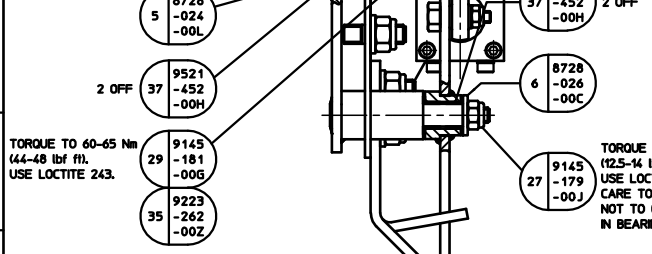
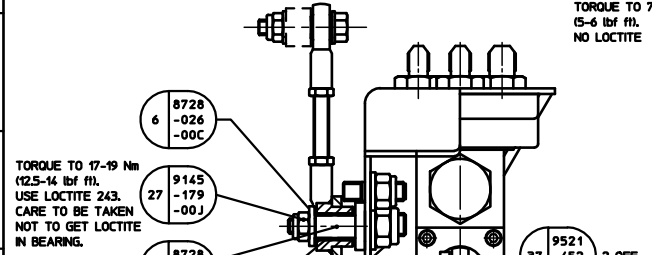
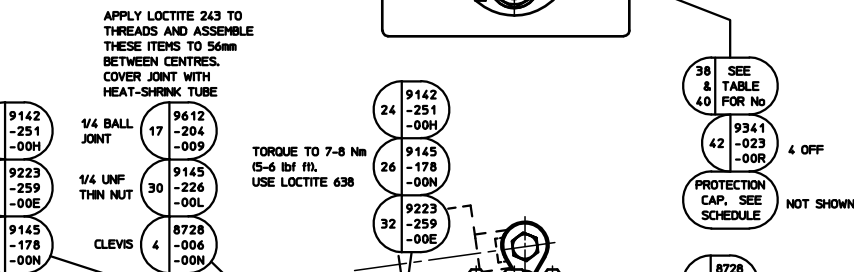
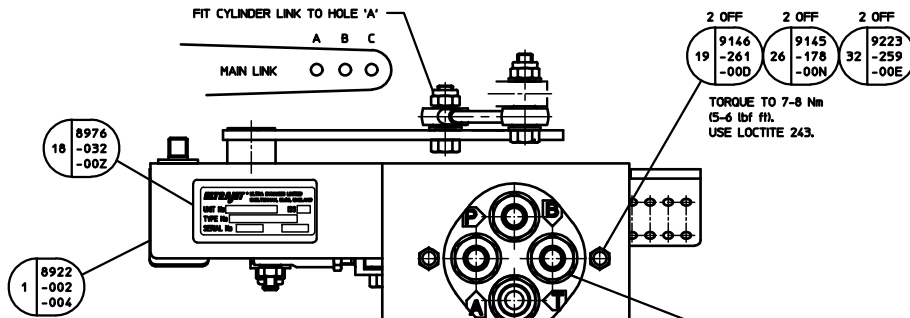


| ASSEMBLY PART No. | CONTROL VALVE TYPE | CONTROL VALVE PART No. | PORT T FITTING | PORT A , B & P FITTING | FLEX HOSE PORT A TO CYL. | FLEX HOSE PORT B TO CYL. | CYLINDER PORT FITTINGS |
|-------------------|--------------------|------------------------|-------------------------|-------------------------|--------------------------|--------------------------|-------------------------|
| 2002-005-0AD | OPEN CENTRE | (7) 8728-014-00R | (40) 9162-004-00S (BSP) | (38) 9162-022-00Q (BSP) | | | (48) 9162-607-00Y (BSP) |
| 2002-005-0BB | CLOSED CENTRE | (7) 8728-014-0AX | (40) 9162-004-00S (BSP) | (38) 9162-022-00Q (BSP) | | | (48) 9162-607-00Y (BSP) |
| 2002-005-0C9 | OPEN CENTRE | (7) 8728-014-00R | (40) 9162-601-00W (JIC) | (38) 9162-600-006 (JIC) | (51) 9616-33G-294 (JIC) | (50) 9616-34A-37Q (JIC) | (48) 9162-901-00D (JIC) |
| 2002-005-0DY | CLOSED CENTRE | (7) 8728-014-0AX | (40) 9162-601-00W (JIC) | (38) 9162-600-006 (JIC) | (51) 9616-33G-294 (JIC) | (50) 9616-34A-37Q (JIC) | (48) 9162-901-00D (JIC) |

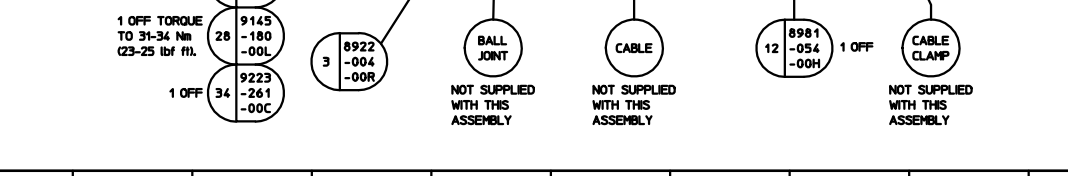


VIEW SHOWING ORIENTATION OF HOSES



NOTE: THIS IS A REDUCED DRAWING PLEASE DO NOT SCALE

| ISSUE No. | 1 | 2 | 3 | 4 |
|-----------|-----------------|---------------|-----------------|--------------------|
| ISSUED ON | 3790 | AU17367 | AU17436 | AU17578 |
| DRAWN | R.M.Day | R.M.Day | K.Bradley | P.C.B. |
| DATE | 20-12-01 | 8-5-02 | 21-03-03 | 25-8-04 |
| CHECKED | N.Lane 21/01/01 | N.Lane 9/5/02 | P.Berry 27-3-03 | K.Bradley 31/04/04 |
| APPROVED | N.Lane 21/01/01 | N.Lane 9/5/02 | N.Lane 27-3-03 | N.Lane 31/04/04 |



| | | |
|---|--|--|
| UNLESS OTHERWISE STATED ALL DIMENSIONS IN MILLIMETRES. GENERAL MANUFACTURING STANDARDS TO BS 200. GEOMETRIC TOLERANCES AND SYMBOLS TO BS 308. | ULTRA DYNAMICS LIMITED 2004 THIS DRAWING IS THE PROPERTY OF ULTRA DYNAMICS LIMITED AND IS CONFIDENTIAL. IT IS ISSUED SUBJECT TO THE CONDITIONS THAT: 1) NO INFORMATION ON ANY PART THEREOF CONTAINED IN IT SHALL BE REPRODUCED IN ANY FORM TO A THIRD PARTY, AND 2) IF ON ANY PART OF IT SHALL NOT BE REPRODUCED IN ANY FORM. | THIRD ANGLE PROJECTION TITLE: HYDRO - MECHANICAL REVERSE CONTROL SYSTEM ASSEMBLY DRAWING No.: 2002-005-0AD DATE: 20-12-01 SCALE: 1:1 |
| ULTRA DYNAMICS LTD CHELTENHAM, GLOS., ENGLAND, A0 | | SIZE: A0 |