

# ULTRAJET<sup>®</sup> 251

## UltraJet 251 Features & Benefits

- New low profile for lower decks
- New hydrodynamic intake housing
- Higher inspection cover to prevent overflow
- Integral hydraulic oil cooler
- Improved reversing with new reverse deflector
- New sealed drive bearings for reduced maintenance
- Less static hull immersion required for initial priming
- Wide range of Ultra-developed mechanical and electrical reversing controls
- Standard rubber impeller shaft bearing or optional composite bearing if dry running is required
- Lightweight and compact design with a variety of on jet and remote mounted hydraulic control systems
- High propulsive efficiency
- Superior manoeuvrability. Ability to accelerate quickly, reverse, stop, rotate, hold station and move sideways for ease of docking.
- Excellent resistance to cavitation in displacement craft - high thrust at low speed.
- Lower vibration and noise levels than other propulsion methods.

## Description

The **ULTRAJET 251** with a 250mm (9.8") diameter impeller provides higher thrust per horsepower when matched to modern engines in the 150-300 bhp range. The UJ251 is one of a range of high performance UltraJet drives developed for commercial, pleasure and military craft.

SINGLE STAGE design utilising four or five bladed impellers to match the specified engine power at a range of input speeds.

The UltraJet251 is derived from the Ultra and Dowty jet drive range used in military and commercial applications for almost forty years. The UJ251 incorporates an efficient and robust axial flow pump, reverse and steering controls, and has many of the same design features as the other modern "UltraJet designs".

### Planing Craft (above 25 knots)

Maximum diesel power input 224 kW (300 bhp). Higher input powers may be approved upon review of the application details. Suitable for loaded craft displacements as follows:-

Single jet up to 4 tonnes (8,816 lb.)  
Twin jets up to 9 tonnes (19,836 lb.)  
Triple jets up to 15 tonnes (33,060 lb.)

### Displacement Craft (below 15 knots)

Maximum diesel power input 112 kW (150 bhp)  
Suitable for loaded craft displacements as follows:-

Note: The displacement figures below can often be exceeded on good hull shapes.

Single jet up to 8 tonnes (17,632 lb.)  
Twin jets up to 18 tonnes (39,672 lb.)  
Triple jets up to 28 tonnes (61,712 lb.)

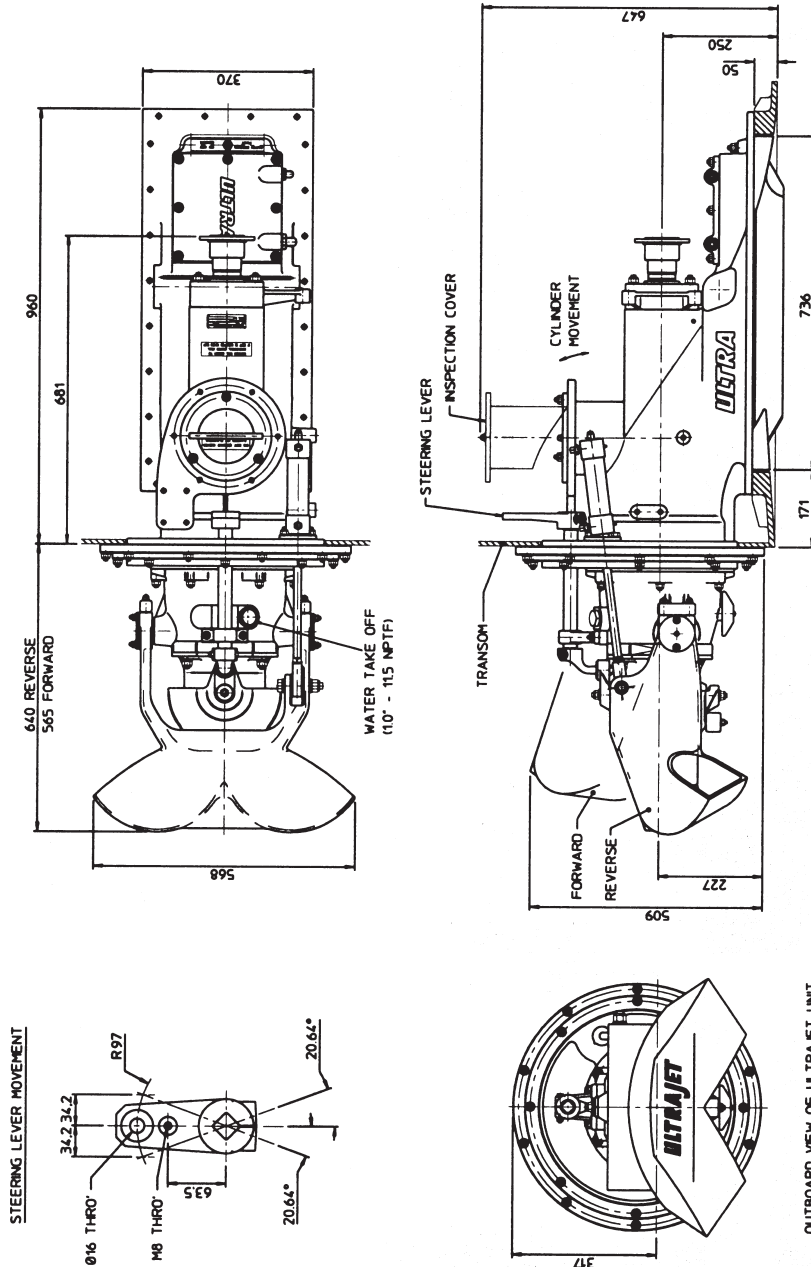


Ultra Dynamics is Lloyds ISO9001 Approved

# UltraJet 251 Installation Data

## Typical Specifications:-

1. Impellers are available to match most diesel and gasoline engine and transmission combinations for optimum thrust performance.
2. DIN, SAE or other drive flange options are available.
3. Unit weight 127 kg (280 lb.) dry (includes hydraulic control system). 160 kg (353 lb.) including entrained water.
4. Consult ULTRA Dynamics Technical Department for vessel and performance analysis.



**Ultra Dynamics Limited**  
 Upperfield Road,  
 Kingsditch Trading Estate  
 Cheltenham, Glos, GL51 9NY, England.  
 Tel: +44 (0)1242 707900 Fax: +44 (0)1242 707901  
 E-mail: sales@ultrajet.co.uk

**Ultra Dynamics Marine, LLC**  
 1110A Claycraft Road  
 Columbus, Ohio 43230, U.S.A.  
 Tel: 614-759-9000  
 Fax: 614-759-9046  
 E-mail: sales@ultradynamics.com

[www.ultradynamics.com](http://www.ultradynamics.com)

*We have a policy of continuous improvement in design. Specifications may, therefore, be changed without notice.  
 When considering applications for this equipment it is recommended that our Technical Sales Department is consulted.*