

# ULTRAJET<sup>®</sup> 305

## New UltraJet 305 Features & Benefits

- New low profile for lower decks
- New hydrodynamic intake housing
- Higher inspection cover to prevent overflow
- Improved reversing with new reverse deflector
- New inboard hydraulic cylinder for reverse deflector operation
- New sealed drive bearings for reduced maintenance
- Less static hull immersion required for initial priming
- Wide range of Ultra-developed mechanical and electrical reversing controls
- Standard rubber impeller shaft bearing or optional composite bearing if dry running is required
- Light weight and compact design with a variety of on jet and remote mounted hydraulic control systems
- High propulsive efficiency
- Superior manoeuvrability. Ability to accelerate quickly, reverse, stop, rotate, hold station and move sideways for ease of docking.
- Excellent resistance to cavitation in displacement craft - high thrust at low speed.
- Lower vibration and noise levels than other propulsion methods.

## Description

The **NEW ULTRAJET 305** with a 12" (305mm) diameter impeller provides higher thrust per horsepower when matched to modern engines in the 250 - 450 bhp range. The UJ305 is one of a range of high performance UltraJet drives developed for commercial, pleasure and military craft.

SINGLE STAGE design utilising four or five bladed impellers to match the specified engine power at a range of input speeds.

The UltraJet 305 is derived from the Ultra and Dowty jet drive range used in military and commercial applications for almost forty years. The UJ305 incorporates an efficient and robust axial flow pump, reverse and steering controls, and has many of the same design features as used in the current "UltraJet designs".

### Planing Craft (above 25 knots)

Maximum input power 336 kW (450 HP)  
Higher input powers may be approved upon review of application details.  
Suitable for craft displacements as follows:-

Single jet up to 6 tonnes (13,224 lb.)  
Twin jet up to 13 tonnes (28,652 lb.)  
Triple jet up to 22 tonnes (48,488 lb.)

### Displacement Craft (below 15 knots)

Maximum input power 224 kW (300 HP)  
Suitable for craft displacements as follows:-

Note: The displacement figures below can often be exceeded on good hull shapes.

Single jet up to 10 tonnes (22,040 lb.)  
Twin jet up to 22 tonnes (48,488 lb.)  
Triple jet up to 35 tonnes (77,140 lb.)



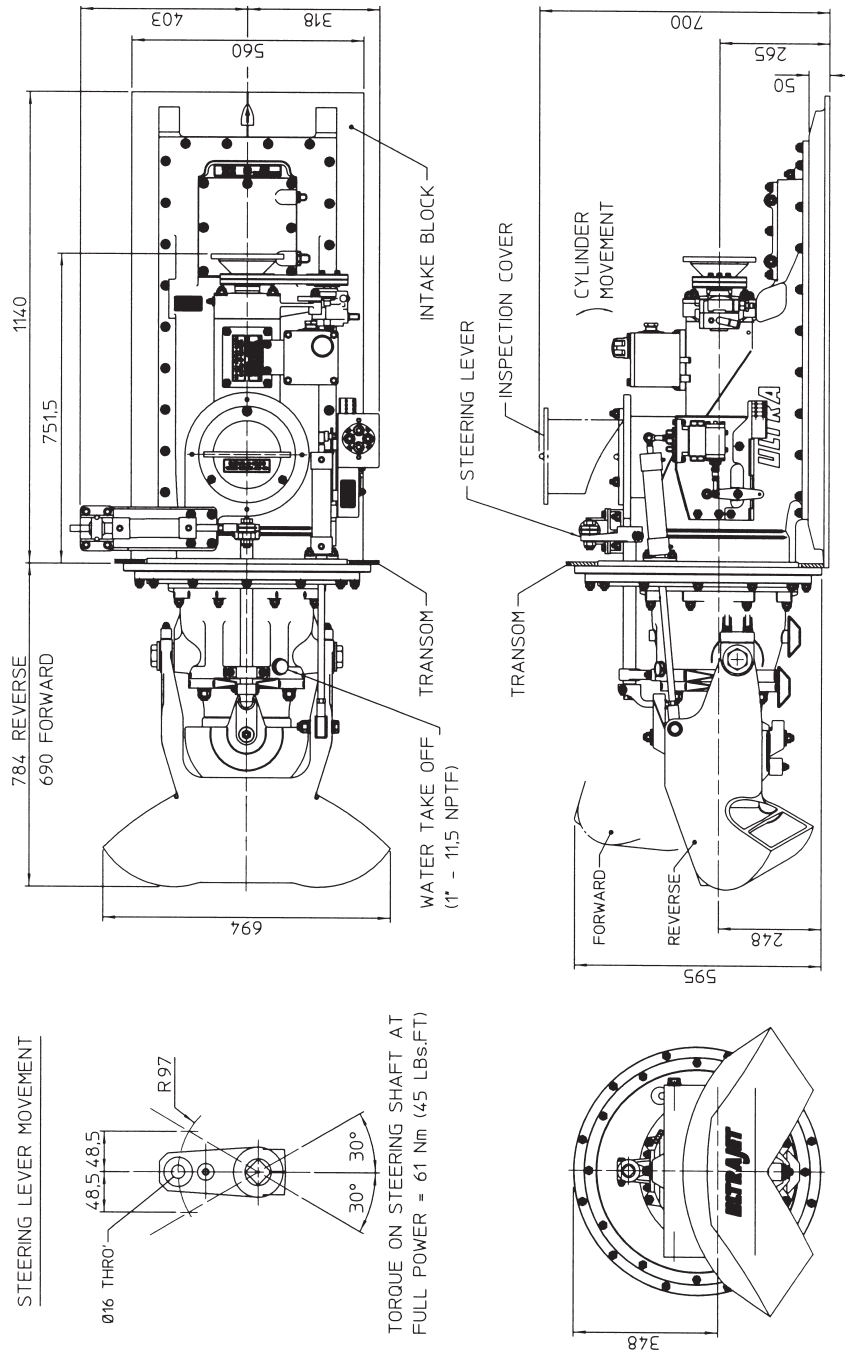
UJ305 with electro-hydraulic controls

Lloyds ISO9001 Approved

# UltraJet 305 Installation Data

## Typical Specifications:-

1. Impellers are available to match most diesel and gasoline engine and transmission combinations for optimum thrust performance.
2. DIN, SAE or other drive flange options can be supplied.
3. Unit weight 184 kgs (406 lbs) dry. 216 kgs (476 lbs) including entrained water. (For guideline only - if a detailed weight analysis is required please contact our Technical Department).
4. Consult ULTRA Dynamics Technical Department for vessel and performance analysis.



**Ultra Dynamics Limited**  
 Upperfield Road,  
 Kingsditch Trading Estate  
 Cheltenham, Glos, GL51 9NY, England.  
 Tel: +44(0) 1242 707900 Fax: +44(0) 1242 707901  
 E-mail Sales@ultradynamics.demon.co.uk

**Ultra Dynamics Marine, LLC**  
 1110A Claycraft Road  
 Columbus, Ohio 43230, U.S.A.  
 Tel: (614) 759 9000  
 Fax: (614) 759 9046  
 E-mail sales@ultradynamics.com

[www.ultradynamics.com](http://www.ultradynamics.com)

We have a policy of continuous improvement in design. Specifications may, therefore, be changed without notice.  
 When considering applications for this equipment it is recommended that our Technical Sales Department is consulted.  
 UD155/10/DTP/8/09 © Ultra Dynamics Ltd Printed in England