

ULTRAJET[®] 410

New UltraJet 410 Features & Benefits

- Compact design with jet-mounted control system
- High propulsive efficiency
- Superior manoeuvrability. Ability to accelerate quickly, reverse, stop, rotate, hold station and move sideways/easier docking
- Excellent resistance to cavitation in displacement craft - superior thrust at low boat speeds compared to other propulsion systems
- Lower vibration and noise levels than other propulsion methods
- Manufactured to highest military and marine quality standards
- Integral hydraulic reservoir and oil cooler
- UltraJet Joystick Control Systems mean complex craft manoeuvres are easier for the operator. Simple to fit - supplied as plug and play
- Inboard hydraulic cylinders for reverse deflector operation
- Ultra-developed electrohydraulic reversing controls
- Integral jet-driven hydraulic pump
- Higher mid-range thrust for improved cruising speed and fuel economy
- Minimal service costs over life of system

Description

The **NEW ULTRAJET 410** with a 410mm (16.1") diameter impeller provides higher thrust per horsepower when matched to modern engines in the 450-900 bhp range. The UJ410 is the latest in the range of high performance UltraJet drives developed for commercial, pleasure and military craft.

SINGLE STAGE design utilising four or five blade impellers to match the specified engine power at a range of input speeds.

The UltraJet 410 is derived from the Ultra and Dowty jet drive range used in military and commercial applications. The hydrodynamically designed UJ410 incorporates an efficient and robust axial flow pump, reverse and steering controls, and is the culmination of over 45 years of research, development and practical experience.

Planing Craft (above 25 knots)

Maximum input power 671 kW (900 bhp). Higher input powers may be approved upon review of the application details. Suitable for craft displacements as follows:-

Single jet up to 14 tonnes (30,856 lb.)
Twin jet up to 32 tonnes (70,528 lb.)
Triple jet up to 50 tonnes (110,200 lb.)

Displacement Craft (below 15 knots)

Maximum input power 336 kW (450 bhp). Suitable for craft displacements as follows:-

Single jet up to 28 tonnes (61,712 lb.)
Twin jet up to 60 tonnes (132,240 lb.)
Triple jet up to 90 tonnes (198,360 lb.)

The upper displacement figures shown for planing craft are maximum displacement values for use only on very good planing hulls. Best efficiency would be achieved when using jets at the lower displacement figures or below.

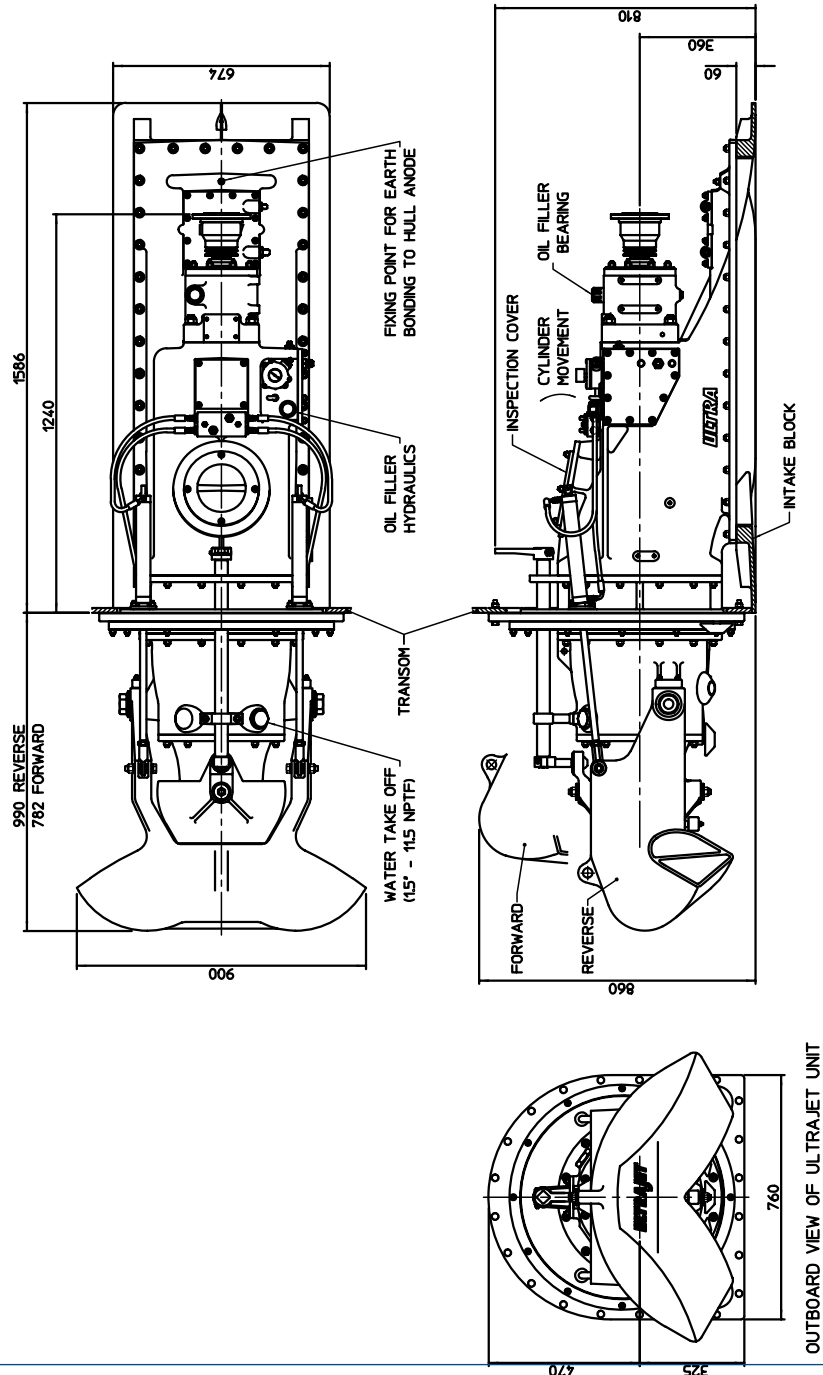


Ultra Dynamics is Lloyds ISO9001 Certified

UltraJet 410 Installation Data

Typical Specifications:

1. Impellers are available to match most diesel engine and transmission combinations for optimum thrust performance.
2. DIN, SAE or other drive flange options are available.
3. Unit weight 440 kg (970 lb.) dry. 547 kg (1,206 lb.) including entrained water. (For guideline only - if a detailed weight analysis is required please contact our Technical Department).
4. Consult ULTRA Dynamics Technical Department for vessel and performance analysis.



Ultra Dynamics Limited

Upperfield Road,
Kingsditch Trading Estate
Cheltenham, Glos, GL51 9NY, England.
Tel: +44(0) 1242 707900 Fax: +44(0) 1242 707901
E-mail: sales@ultrajet.co.uk

Ultra Dynamics Marine, LLC

1110A Claycraft Road
Columbus, Ohio 43230, U.S.A.
Tel: 614-759-9000
Fax: 614-759-9046
E-mail: sales@ultradynamics.com

www.ultradynamics.com

We have a policy of continuous improvement in design. Specifications may, therefore, be changed without notice.

When considering applications for this equipment it is recommended that our Technical Sales Department is consulted.